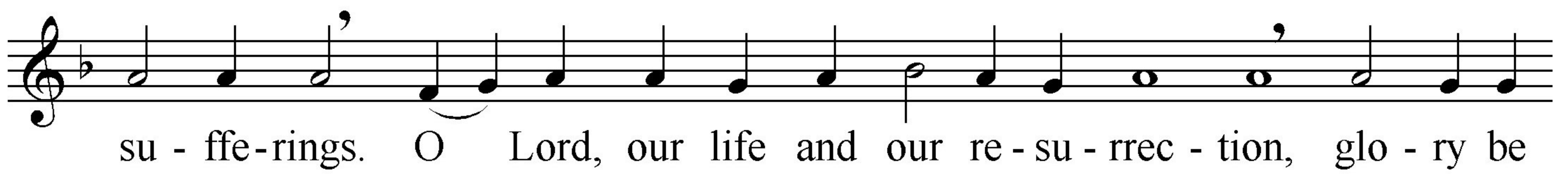
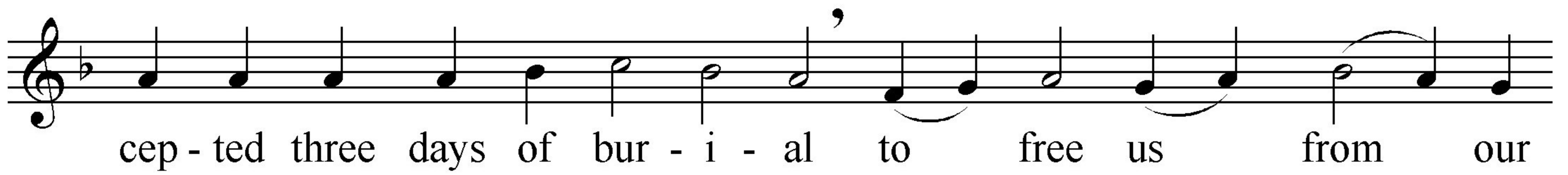
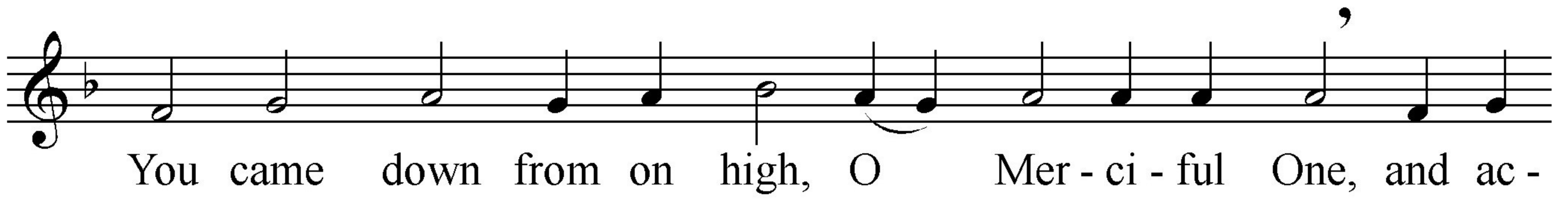
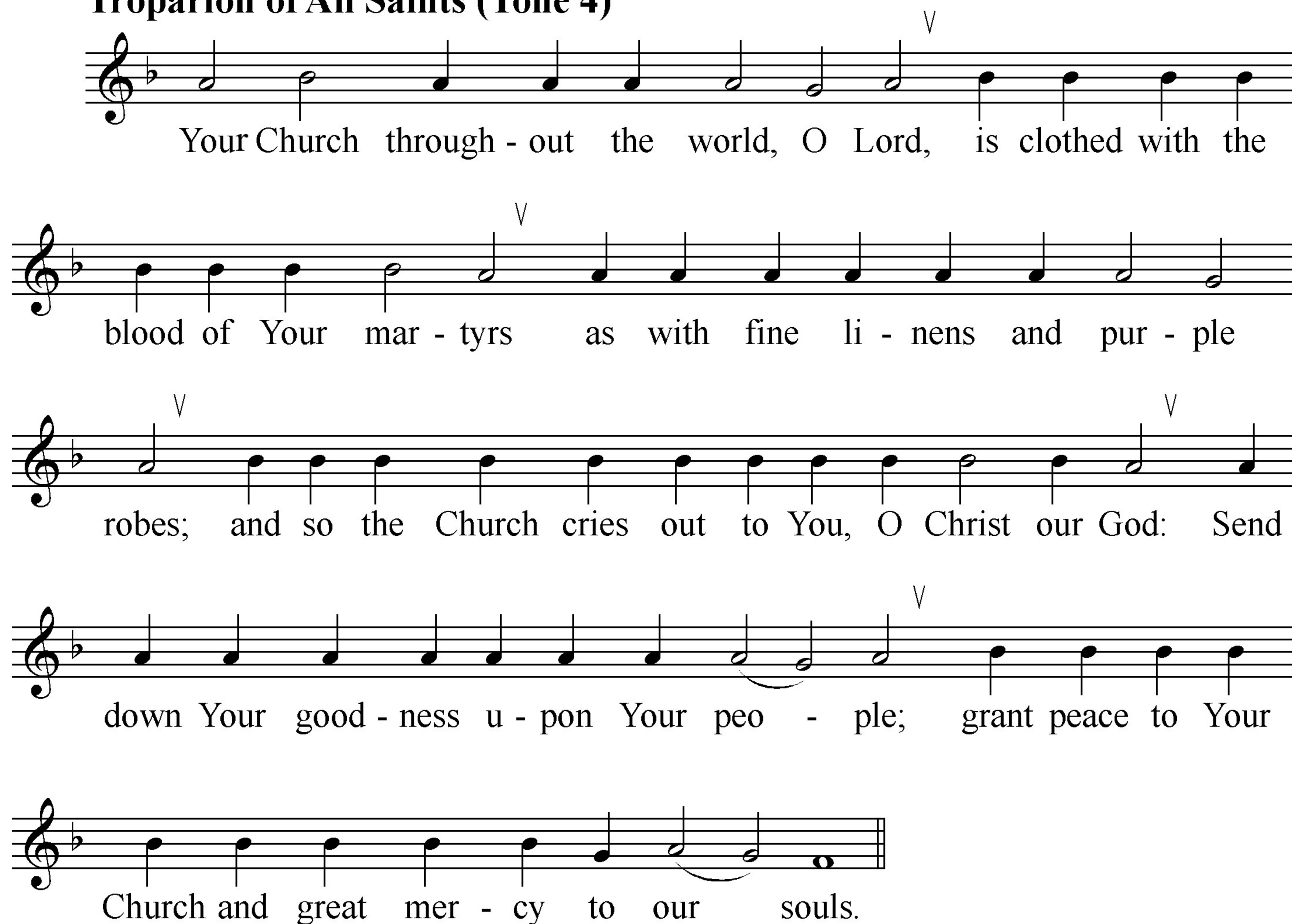


# All Saints

Liturgical Chant

## Troparion Resurrectional (Tone 8)



**Troparion of All Saints (Tone 4)**

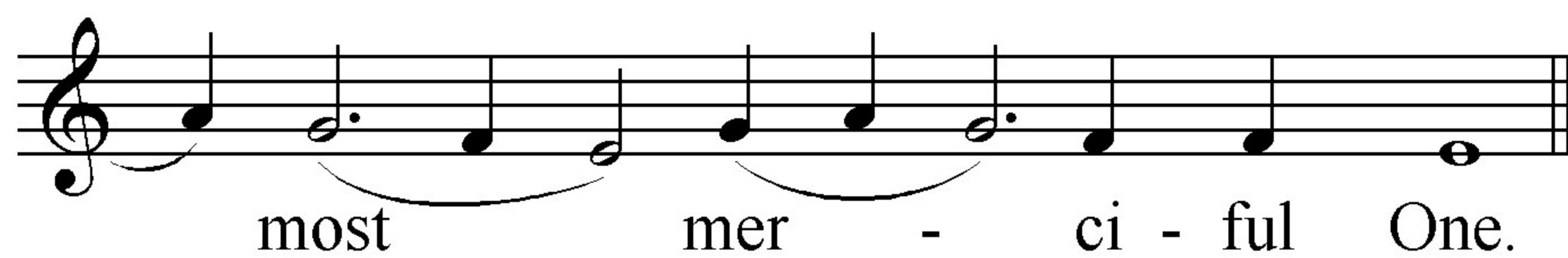
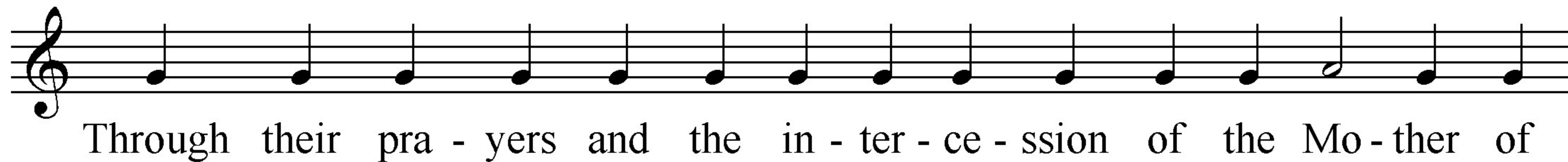
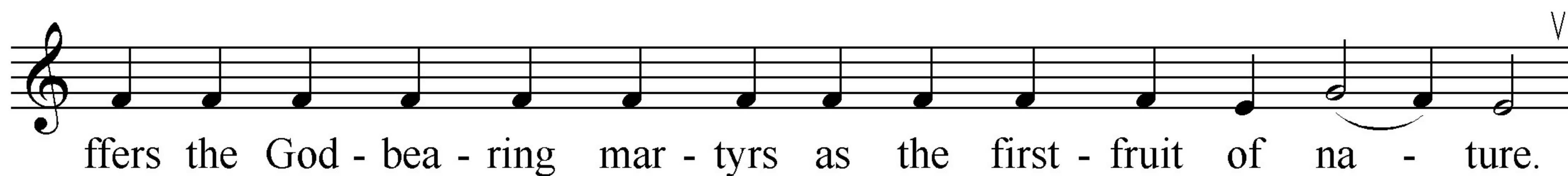
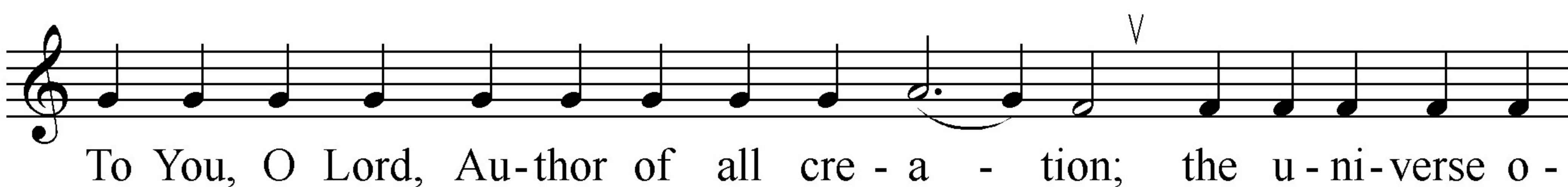
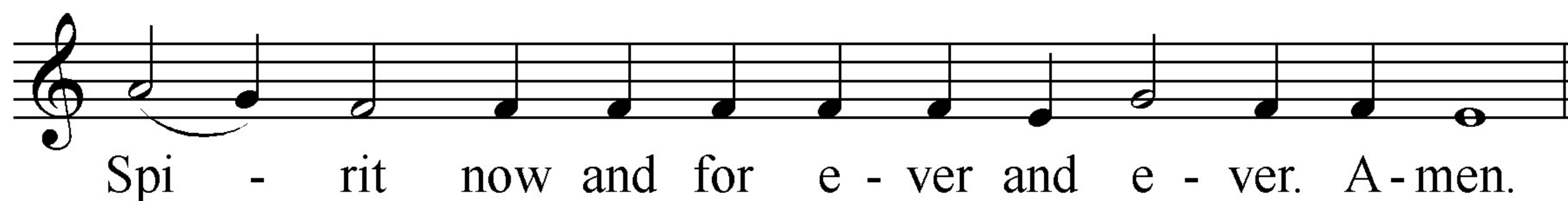
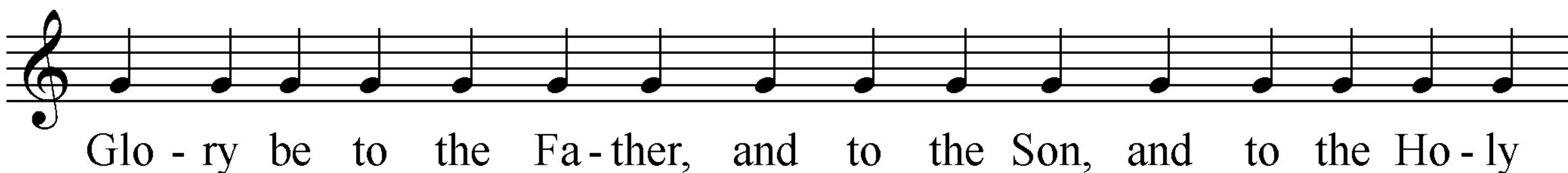
Your Church through - out the world, O Lord, is clothed with the

blood of Your mar - tyrs as with fine li - nens and pur - ple

robes; and so the Church cries out to You, O Christ our God: Send

down Your good - ness u - pon Your peo - ple; grant peace to Your

Church and great mer - cy to our souls.

**Kontakion of All Saints (Tone 8)**

**Prokimenon Resurrectional (Tone 8)**

Pray and give praise to the Lord our God, to the Lord

our God.

The musical notation is on a single staff in G-flat major (one flat). It begins with a treble clef and a key signature of one flat. The melody consists of eighth and quarter notes, with a final cadence. The lyrics are written below the staff, aligned with the notes.

**Verse**

In Ju - de - a God is known; His name is great in Is - ra - el.

The musical notation is on a single staff in G-flat major. It begins with a treble clef and a key signature of one flat. The melody consists of eighth and quarter notes, with a final cadence. The lyrics are written below the staff, aligned with the notes.

**Prokimenon of All Saints is sung the same way the Alleluia below**

**Alleluia (Tone 4)**

Al-le-lu-ia, al - le - lu - - - ia, al - le - lu - ia.

The musical notation is on a single staff in G-flat major. It begins with a treble clef and a key signature of one flat. The melody consists of eighth and quarter notes, with a final cadence. The lyrics are written below the staff, aligned with the notes.

**Verses for Alleluia can be recited  
on the same manner as for Prokimenon**