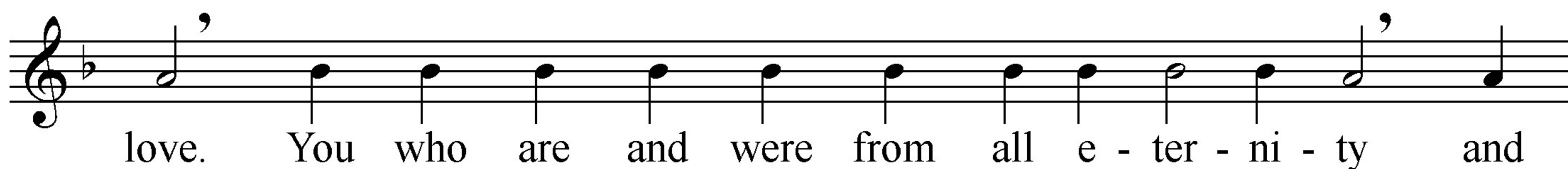
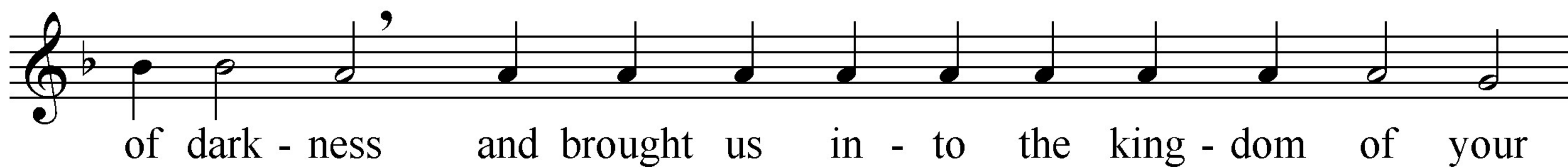


Christ the King

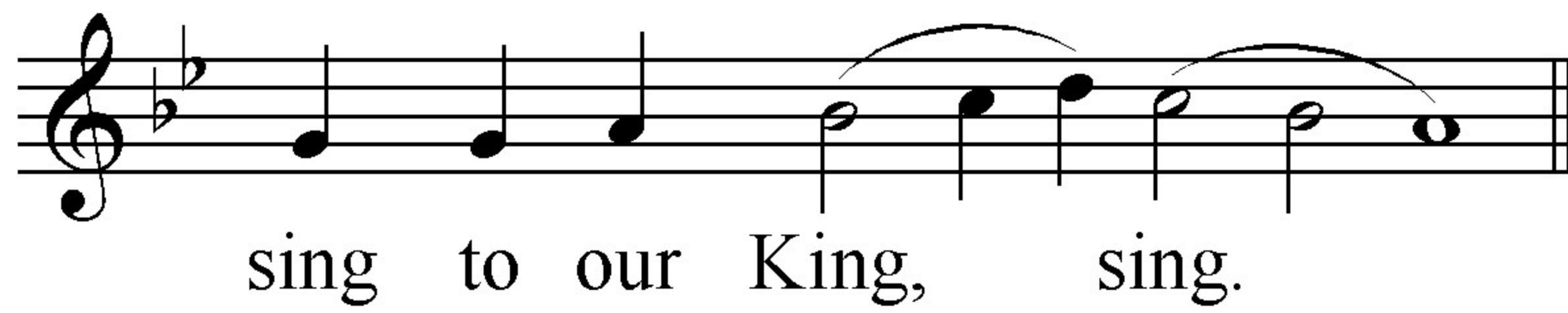
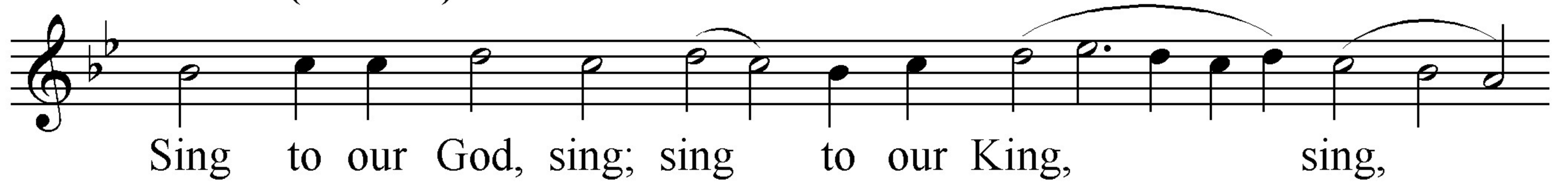
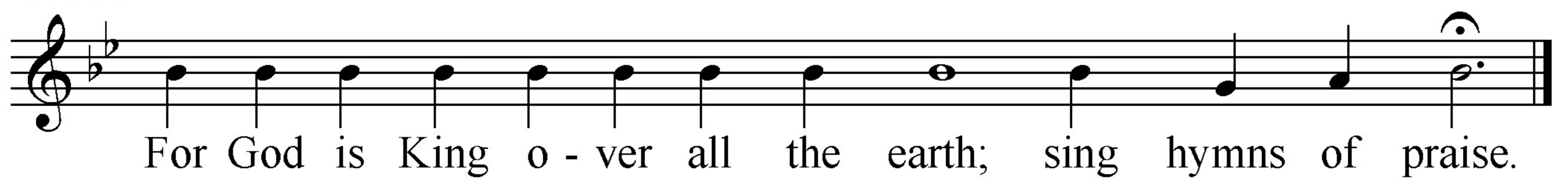
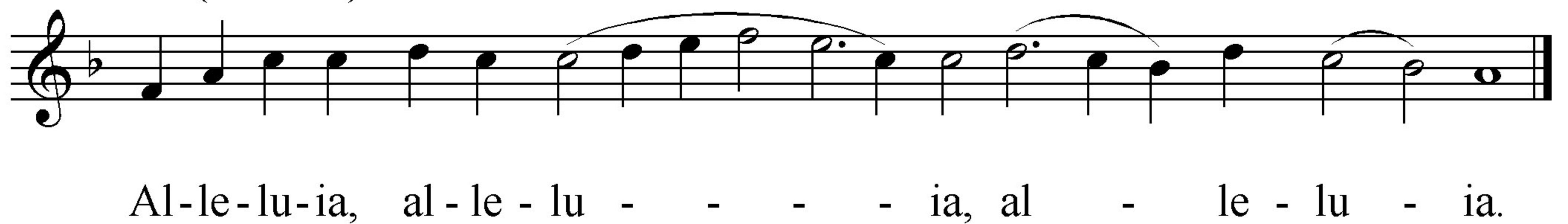
Liturgical Chant

Troparion (Tone 4)



Kontakion (Tone 7)

Glo - ry be to the Fa - ther, and to the Son, and to
the Ho - ly Spi - rit, now and for e - ver and e - ver. A - men.
Let us fall down be - fore Christ God, the on - ly wise and i - mmor -
tal King of a - ges, and a - dore him, say - ing: To You is
gi - ven the pow - er and the glo - ry and the king - dom, and all
na - tions are sub - ject to You. Your pow - er is e - ter - nal
pow - er and your king - dom is in - de - struc - ti - ble. The E - ter -
nal King, Je - sus Christ has be - come a king for our sake.

Prokimenon (Tone 3)**Verse****Alleluia (Tone 4)**

**Verses for Alleluia can be recited
on the same manner as for Prokimenon**