

Sunday of the Paralytic

Liturgical Chant

Troparion Resurrectional (Tone 3)

Let the hea - vens be glad, let the earth re-joyce, for the Lord

has done a migh - ty deed with His arm. He tram - pled

death by death; He be - came the first - born of the dead; He

saved us from the a - byss of Ha - des and gran - ted great

mer - cy to the world.

Troparion of Cyril & Methodius (Tone 4)

As e - quals of the a - po - stles and tea -

chers of the Slavs, beg the Ma - ster of all

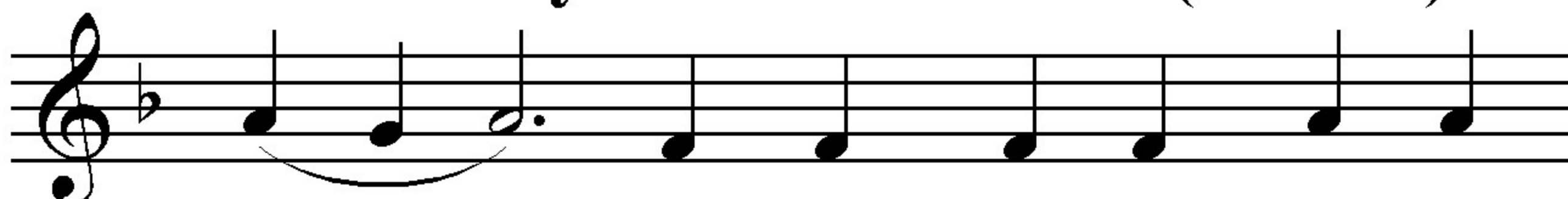
to con - firm us in the faith and in u - ni -

ty of heart, O Cyr - il and Me - tho - di -

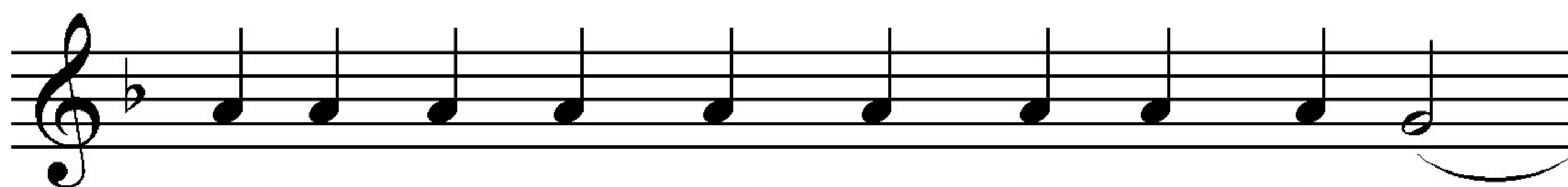
us. Beg Him for peace in the

world and mer - cy on our souls.

Kontakion of Cyril & Methodius (Tone 3)



Glo - ry be to the Fa-ther



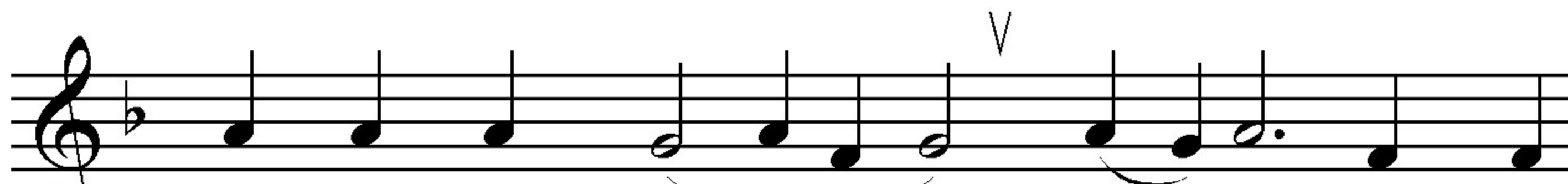
and to the Son and to the Ho - ly Spi -



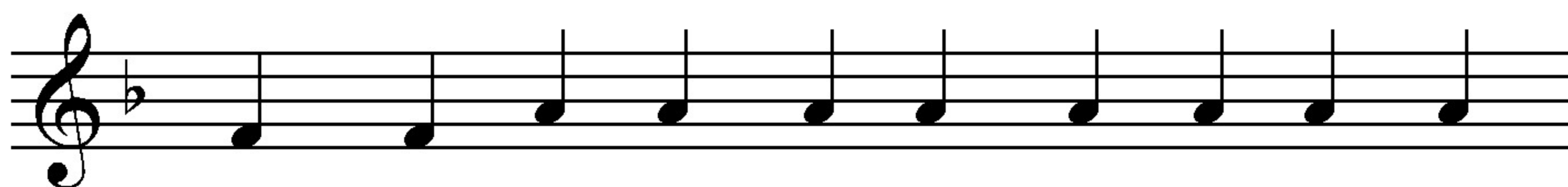
rit.



We ho - nor those priests who



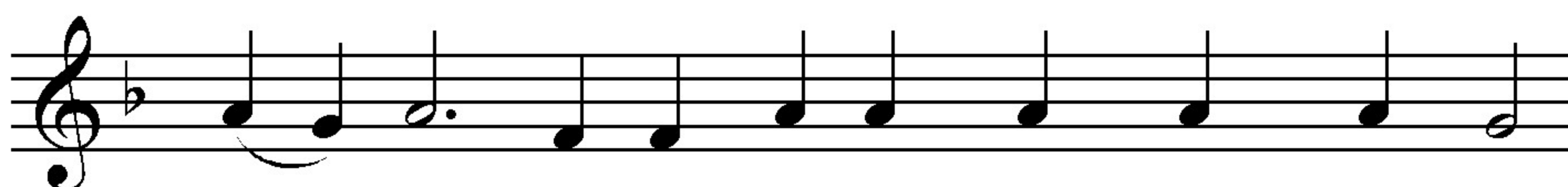
gave us the Light, who o-pened the



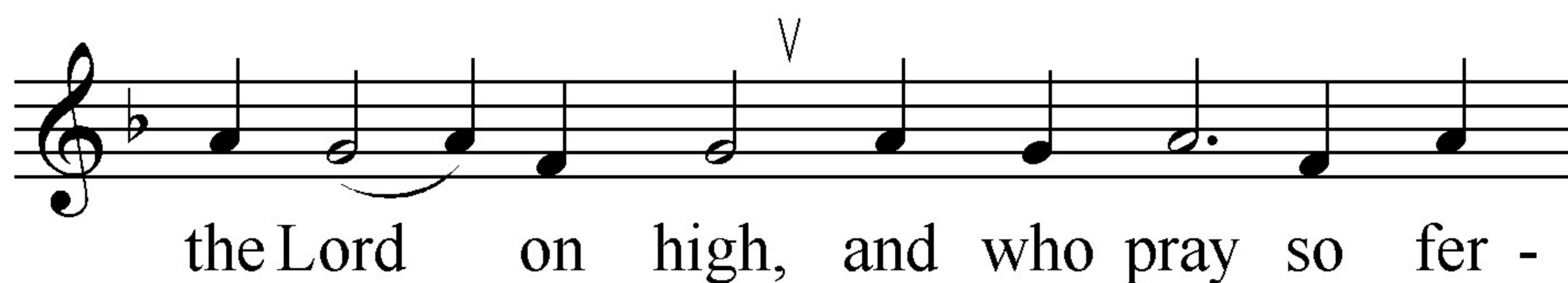
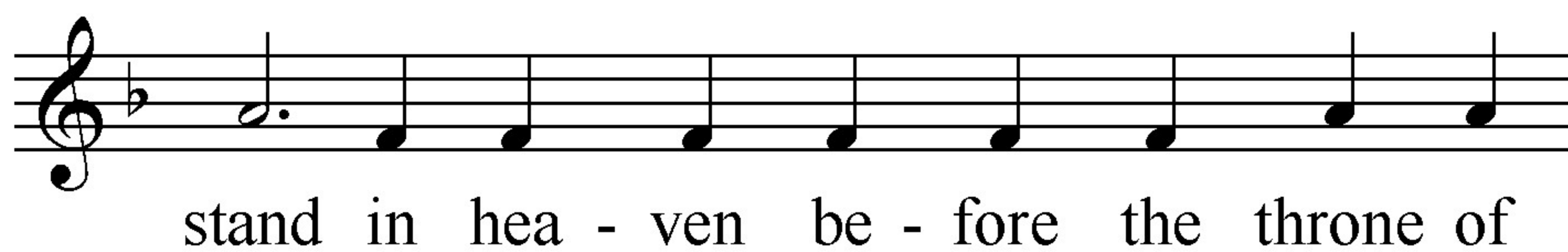
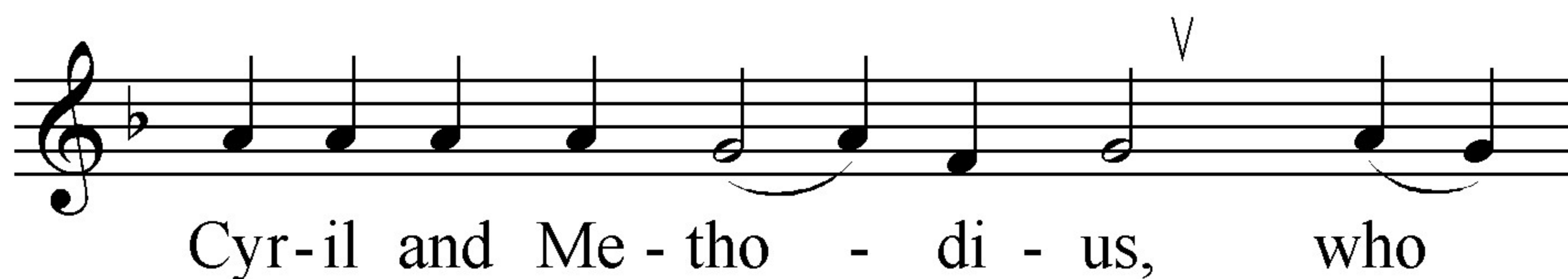
foun - tain of the - o - lo - gy for us by

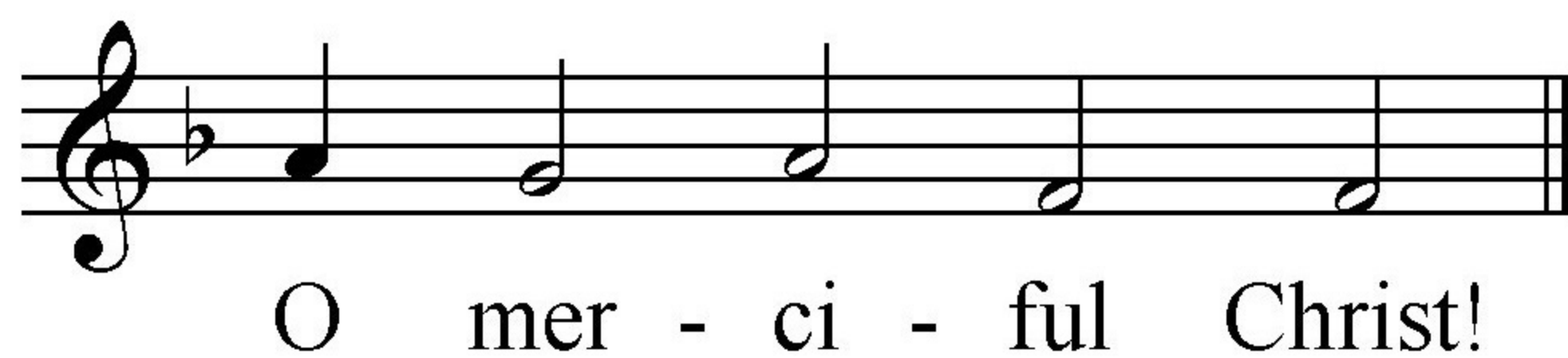
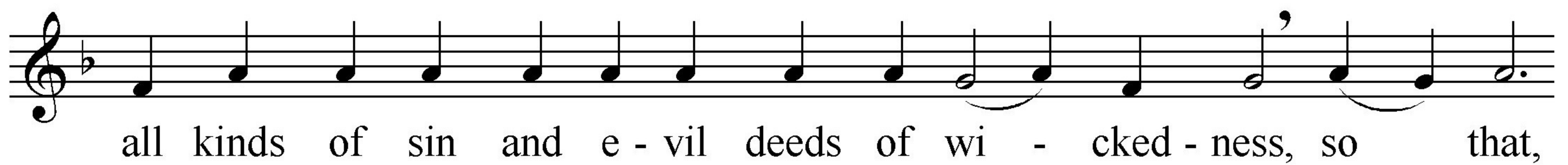
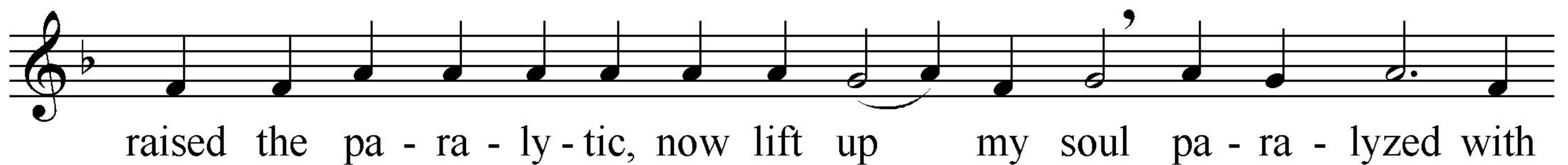
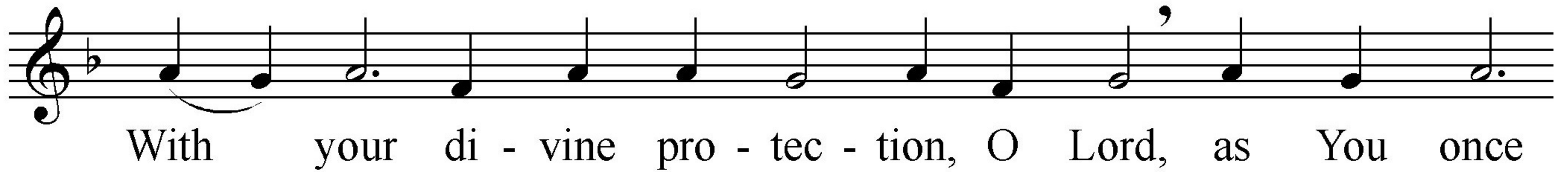


trans - la - ting the Ho - ly Scrip - tures,



thus star - ting a ri-ver from them that still



Kontakion of the Paralytic (Tone 3)

Prokimenon Resurrectional (Tone 1)

Let your mer - cy, O Lord, be u - pon us, as
we have hoped in You.

The musical notation is written on a single staff in G-flat major (one flat). The melody for the first line consists of 14 notes: G4 (quarter), A4 (quarter), Bb4 (quarter), C5 (quarter), D5 (quarter), E5 (half), D5 (half), C5 (quarter), Bb4 (quarter), A4 (quarter), G4 (quarter), F4 (half), E4 (half), and D4 (half). The second line consists of 5 notes: D4 (quarter), E4 (quarter), F4 (quarter), G4 (quarter), and A4 (half). The lyrics are placed below the notes, with hyphens indicating syllables spanning multiple notes.

Alleluia (Tone 5)

A - lle - lu - ia, a - lle - lu - ia, a - lle - lu - - - -
ia, a - lle - lu - ia, a - lle - lu - ia.

The musical notation is written on a single staff in G-flat major (one flat). The melody for the first line consists of 18 notes: G4 (quarter), A4 (quarter), Bb4 (quarter), C5 (quarter), D5 (quarter), E5 (half), D5 (half), C5 (quarter), Bb4 (quarter), A4 (quarter), G4 (quarter), F4 (half), E4 (half), D4 (half), C4 (half), B3 (half), A3 (half), and G3 (half). The second line consists of 10 notes: G4 (quarter), A4 (quarter), Bb4 (quarter), C5 (quarter), D5 (quarter), E5 (half), D5 (half), C5 (quarter), Bb4 (quarter), and A4 (half). The lyrics are placed below the notes, with hyphens indicating syllables spanning multiple notes.