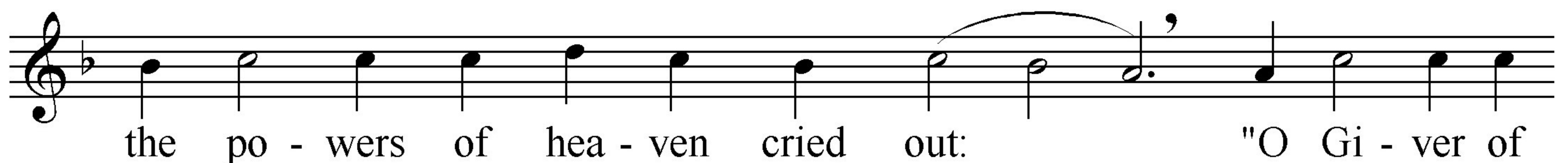
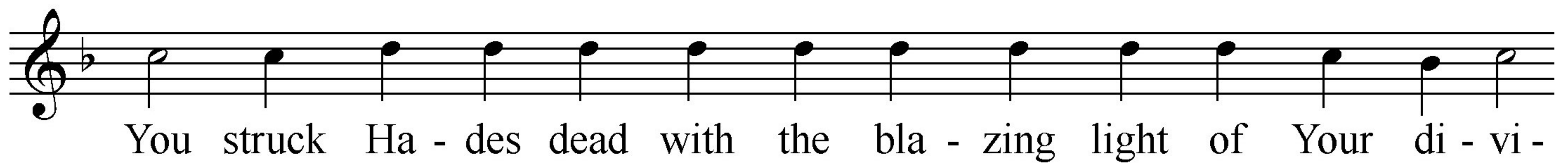
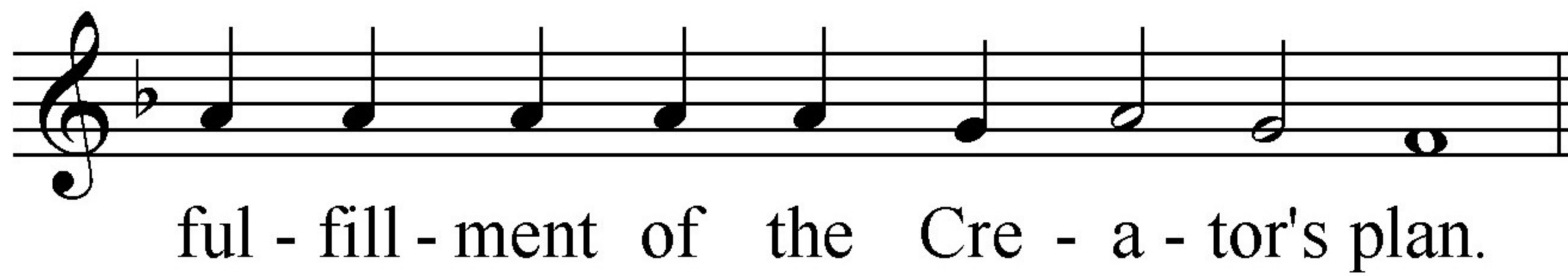
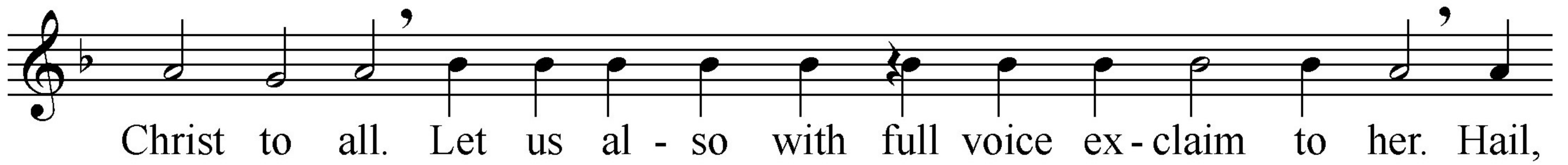
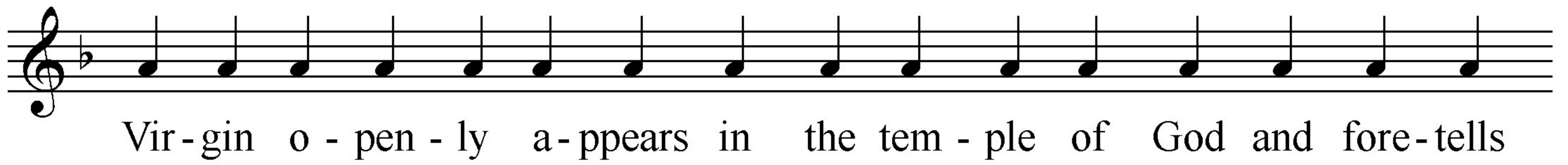
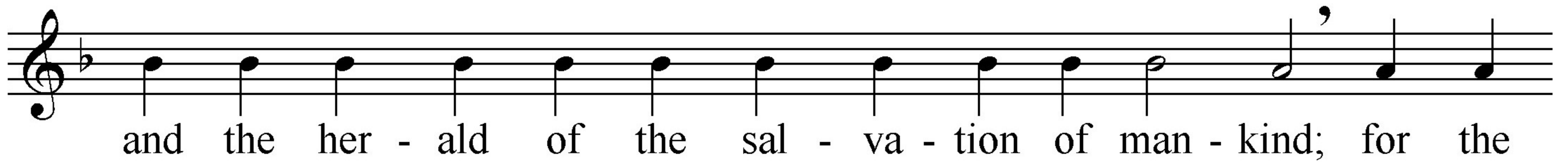
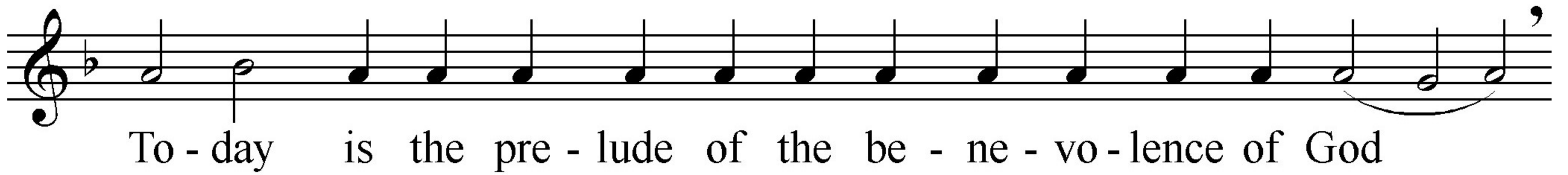


# Sunday and Postfeast of the Entrance

Liturgical Chant

## Troparion Resurrectional (Tone 2)



**Troparion of the Entrance (Tone 4)**

## Kontakion Resurrectional (Tone 2)



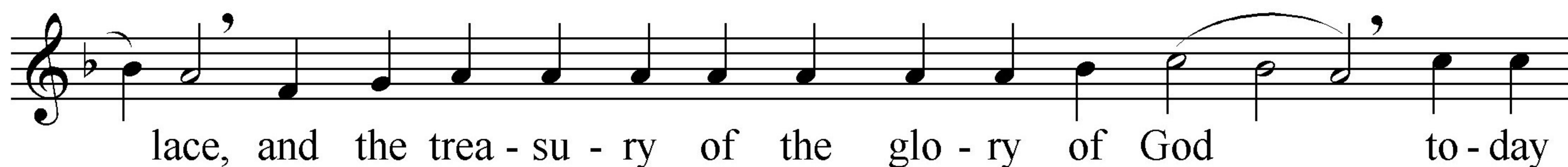
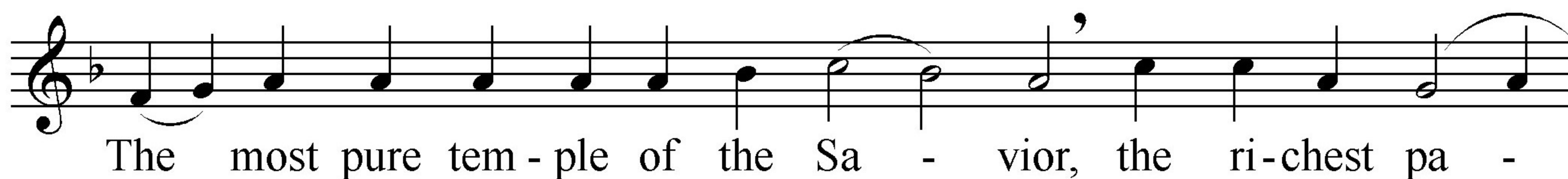
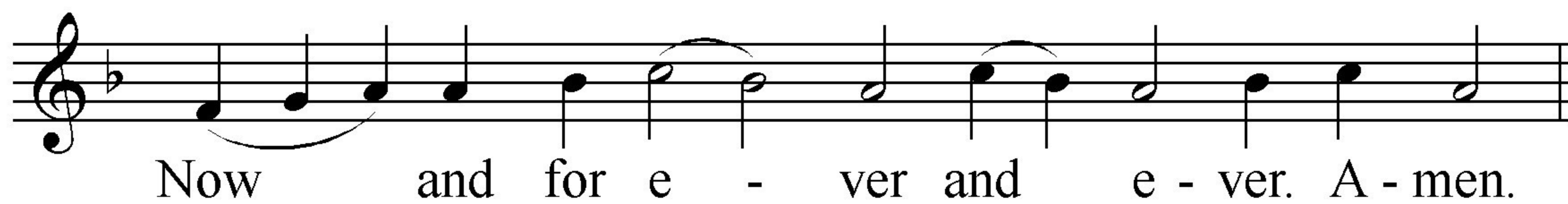
First line of musical notation in G major, 4/4 time. The melody begins with a treble clef and a key signature of one flat (B-flat). The notes are: G4 (quarter), A4 (quarter), B4 (quarter), C5 (quarter), B4 (quarter), A4 (quarter), G4 (quarter), F#4 (quarter), E5 (half), D5 (half), C5 (half), B4 (half), A4 (quarter), G4 (quarter), F#4 (quarter), E5 (quarter). The lyrics "You rose from the tomb, O Al - migh-ty Sav - ior; and Ha - des," are written below the staff.

see - ing this won - der, was stri - cken with fear; and the dead a - rose. Cre-

[illegible]

my Sa - vior, signs Your prai - ses for e - ver.



**Kontakion of the Entrance (Tone 4)**

**Prokimenon Resurrectional (Tone 2)**

The Lord is my strength and my song of praise, and He has be -  
come my sal - va - tion, and He has be - come my sal - va -  
tion.

**Verse (can be recited on this pattern)**

The Lord has in-deed cha - stised me, but He has not de - li - vered me  
to death.

**Alleluia (Tone 2)**

A - lle - lu - ia, a - lle - lu - ia, a - lle - lu - - - - ia, a -  
lle - lu - ia, a - lle - lu - ia.

**Verses for Alleluia can be recited  
on the same manner as for Prokimenon**



# Entrance into the Temple

Liturgical Chant

## *Verse*

See - - - - ing the en - try of the Most  
Pure One, the an - gels mar - - - - ve - - - - led at  
how a Vir - gin could en - ter the Ho - ly  
of Ho - li - es.

## *Hirmos (Tone 4)*

Let no hu - man hand touch the  
li - - - - ving ark of God,  
but let the lips of the faith - ful un - cea - sing -  
ly sing the words which the an - gel spoke to

