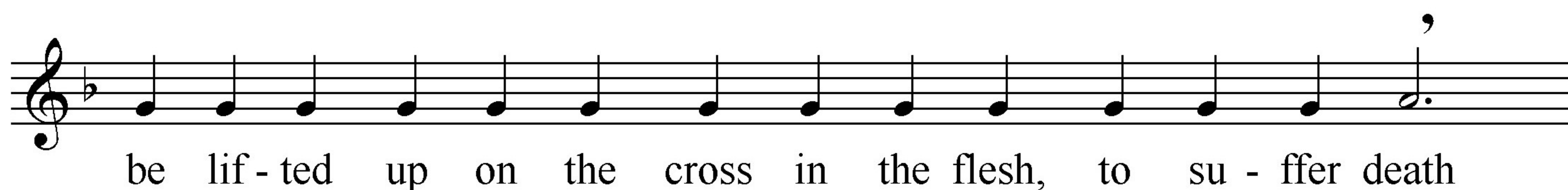
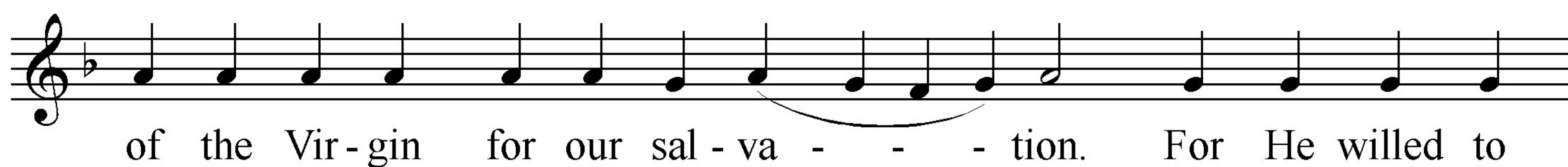
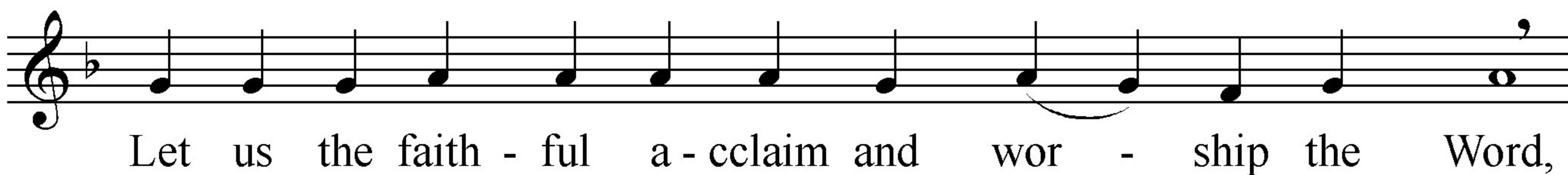


# Sunday before Theophany

Liturgical Chant

## Troparion Resurrectional (Tone 5)



**Troparion of the Prefeast of Thephany (Tone 4)**

Make rea - dy, O Za - bu - lon, and pre - pare your - self, O Neph -

ta - li; O Ri - ver Jor - dan, stop and re - ceive with joy

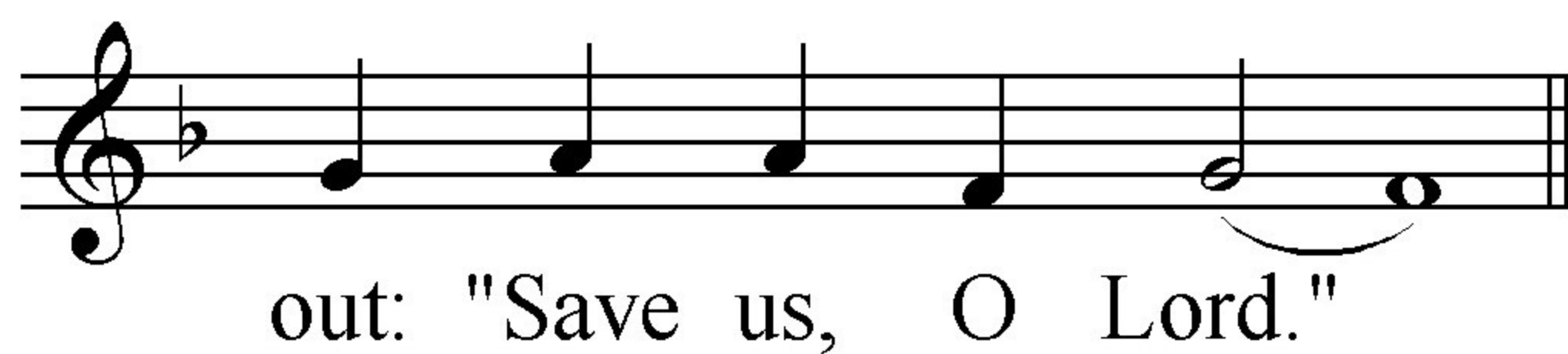
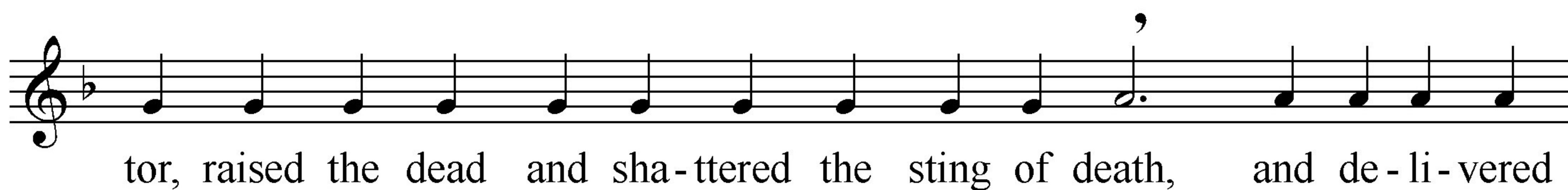
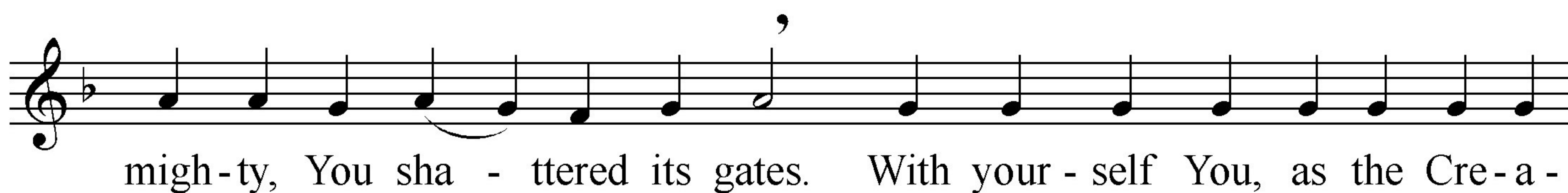
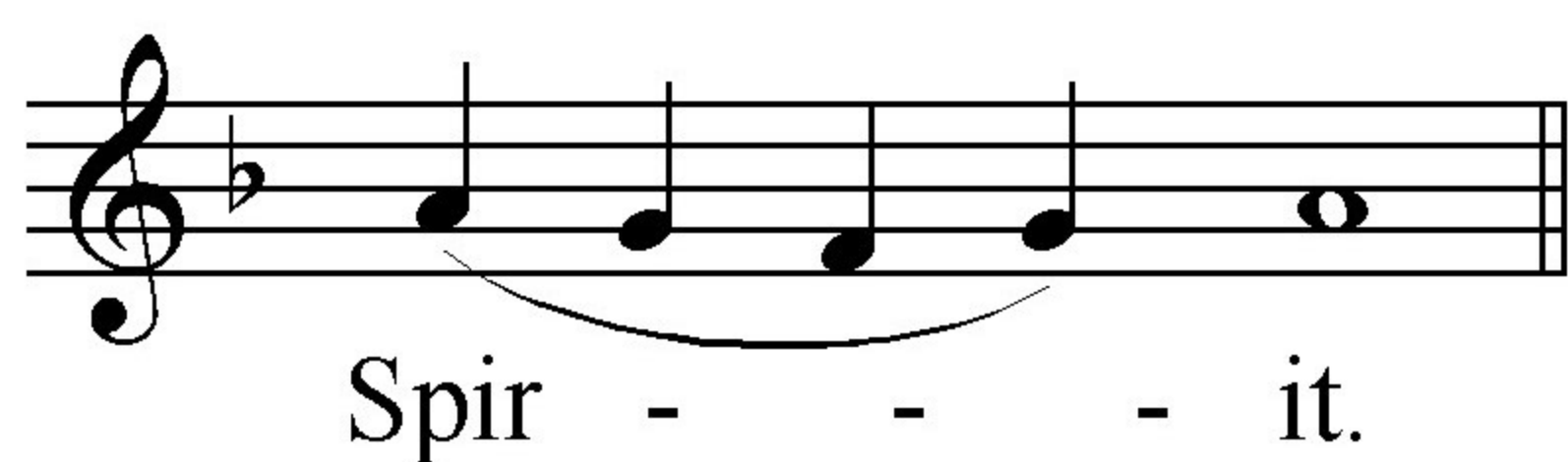
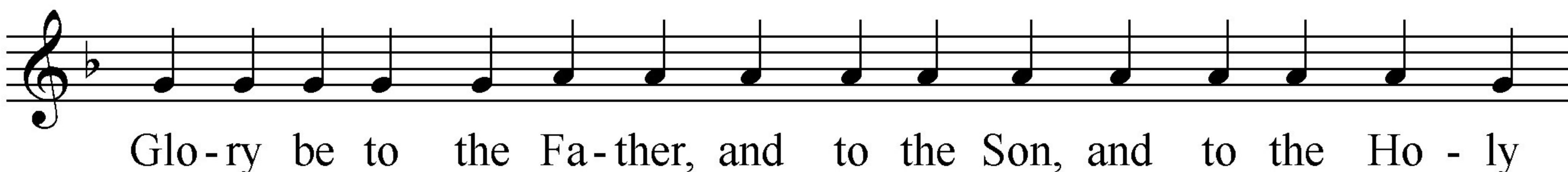
the Mas - ter co - ming to be bap - tized. O A - dam, re - joice

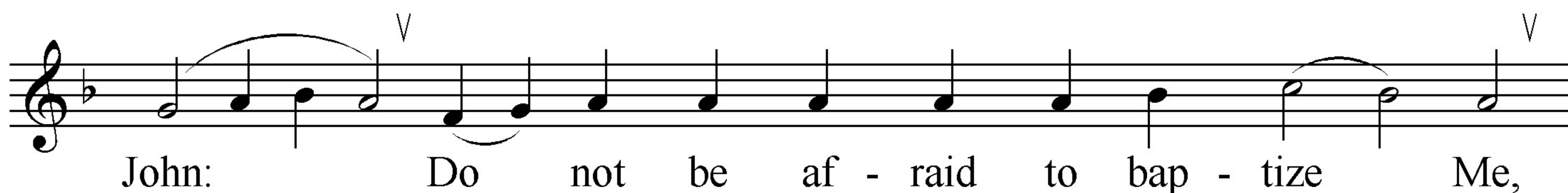
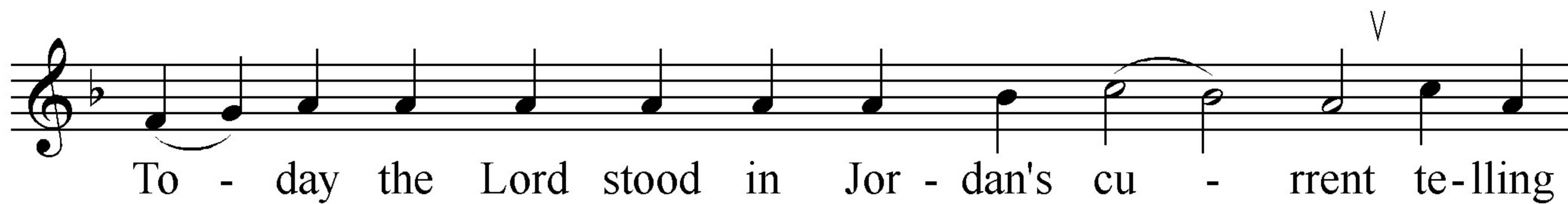
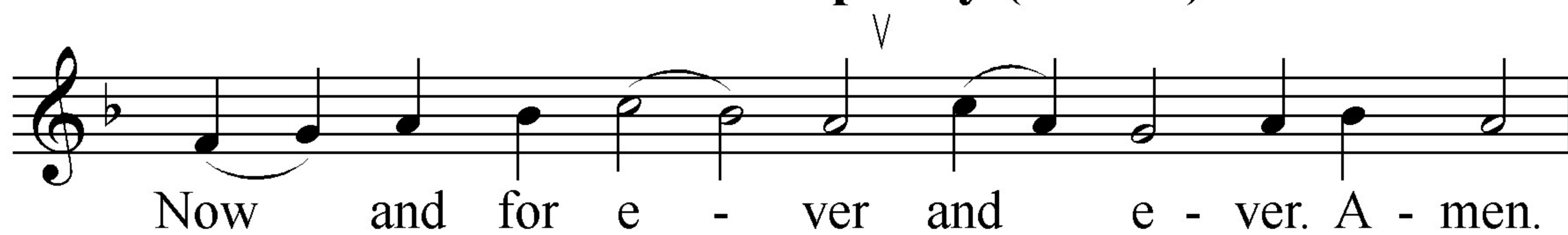
with the first mo - ther, Eve, and do not hide your - selves as be -

fore in pa - ra-dise. For, ha - ving seen you un - clothed, Christ has a - ppeared

to clothe you with the first robe: He has a - ppeared to re - new all

cre - a - tion.

**Kontakion Resurrectional (Tone 5)**

**Kontakion of the Prefeast of Thephany (Tone 4)**



# **Prokimenon (Tone 6)**

Save, Your peo - ple, O Lord, and bless Your in -

he - ri - tance, and bless Your in - he - - - ri - tance.

The musical notation for Prokimenon (Tone 6) is written on a single staff in G-flat major (one flat). It begins with a treble clef and a key signature of one flat. The melody consists of quarter and eighth notes, with some notes beamed together. There are several slurs over the melody, indicating phrasing. The lyrics are written below the staff, aligned with the notes.

## **Verse**

Un-to You I will cry, O Lord, my God, lest You turn from

me in si - lence.

The musical notation for the Verse is written on a single staff in G-flat major (one flat). It begins with a treble clef and a key signature of one flat. The melody consists of quarter and eighth notes, with some notes beamed together. There are several slurs over the melody, indicating phrasing. The lyrics are written below the staff, aligned with the notes.

## **Alleluia (Tone 8)**

A - lle - lu - ia, a - lle - lu - - - ia, a - lle - lu - -

ia, a - lle - lu - ia.

The musical notation for Alleluia (Tone 8) is written on a single staff in G-flat major (one flat). It begins with a treble clef and a key signature of one flat. The melody consists of quarter and eighth notes, with some notes beamed together. There are several slurs over the melody, indicating phrasing. The lyrics are written below the staff, aligned with the notes.